

## MAIN FEATURES AND BENEFITS

### HYDRAULIC ROTATION

Equipped with a 360° hydraulic system to allow or correct alignment during use.

### END OF STROKE STOP

Significantly reduces the stresses on the hydraulic cylinder, and pins/bushings throughout the frame.

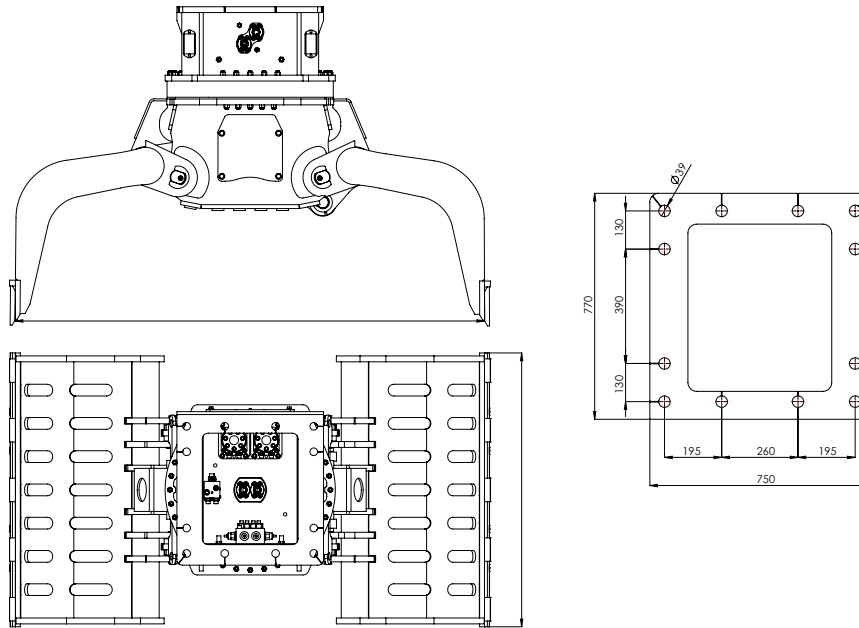
### PREMIUM-GRADE WEAR-RESISTANT STEEL

Proudly made with Hardox steel, known for its excellent toughness and impact resistance, making it ideal for heavy-duty applications.

### EFFICIENT AND SAFE HANDLING

The robust design allows for efficient and safe handling of most construction materials such as wood, block/brick, plaster.

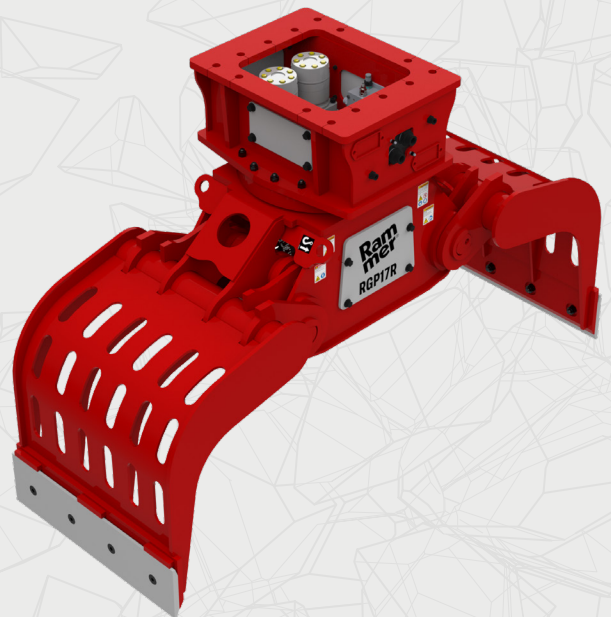
# Rammer® RGP17R



## Specifications

OPERATING TOTAL WEIGHT (kg/lb)	1180 / 2600
WEIGHT (kg/lb)	1066 / 2350
HEIGHT (mm/in)	1400 / 55
OPENING (mm/in)	2060 / 81
WIDTH (mm/in)	800 / 31.5
OIL PRESSURE (bar / psi)	300 / 4351
ROTATION PRESSURE (bar / psi)	120 / 1740
ROTATION CAPACITY (l/min, gal/min)	15-20 / 4-5
OIL FLOW (l/min, gal/min)	80 / 21
EXCAVATOR WEIGHT (t / lb)	14-18 / 30800-39600

Specifications are subject to change without notice



Rammer is steadily working to improve its sustainability. For us, the durability of our products is one of the key elements in paving the way towards a better future. Developed in the harshest conditions, Rammer's products are designed specifically to stand the test of time, no matter the climate or application they're used for. In a world where things are constantly changing, Rammer's products are the trusted players that stand by your side, whatever challenges may come.

Sandvik Rock Processing

[www.rammer.com](http://www.rammer.com)

**Rammer®**